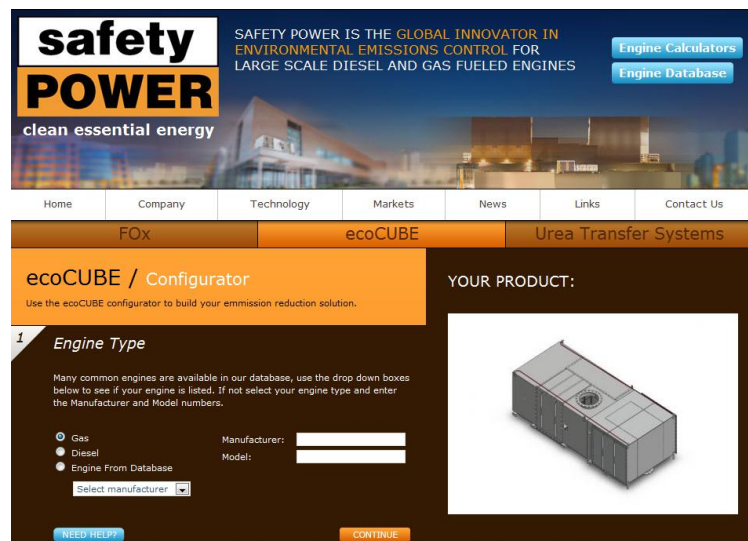


Welcome to this issue of the Safety Power News. Safety Power is a recognized global innovator and Canada's largest provider of environmental solutions for large scale diesel and natural gas engines. In this issue we focus on the roll-out of our new WEB site and the MagRelief™ valve an important new safety innovation for emissions systems recently patented by Safety Power. As always your feedback is most welcome - Bob Stelzer, Safety Power Inc bob.stelzer@safetypower.ca . More info is also available at www.safetypower.ca

WEB Site – powerful tool for Consultants & Specifiers

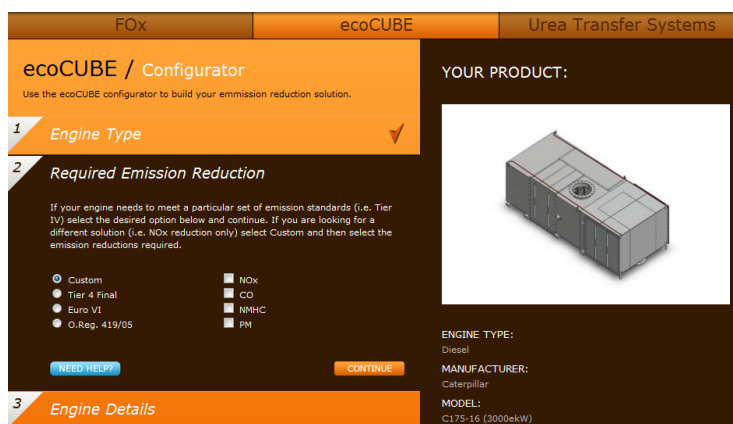


Our new WEB site makes it easy to configure an emissions system for a large scale diesel or natural gas engine. The system will give you the approximate dimensions of the required ecoCUBE™ and a generic product specification.

At www.safetypower.ca go to the ecoCUBE™ tab. Select the engine manufacturer from the drop down list. Then select the engine from that manufacturer. Over 40 engine types are listed in our database, reflecting the large range of engines Safety Power has already configured. In the event your engine is not in our database simply enter its emission parameters from the

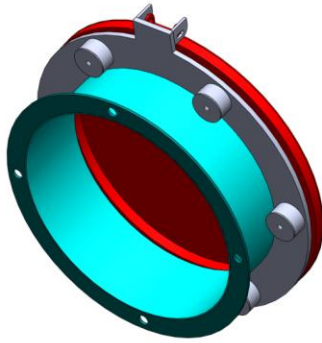
engine manufacturer's spec sheets.

The next step is to specify what emissions reductions you require. You can choose from the list of various global regulatory requirements (ie Tier 4, Euro VI etc) or you can indicate which emissions you wish to mitigate. Simply follow through the remaining steps in the Configurator to identify the required inlet configuration, outlet configuration, mounting method and whether you would like silencing in the ecoCUBE™. Once you have answered the required questions the Configurator gives you all of the associated drawing views and the associated dimensions. If you wish you can then send the output of the Configurator to Safety Power for a quote.

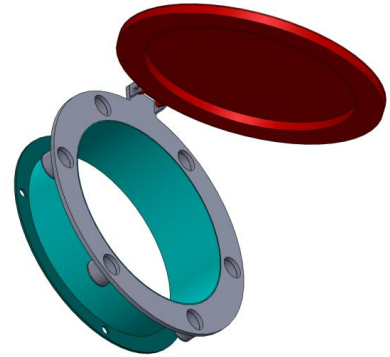


On the ecoCUBE™ main page you will find generic specifications included as WORD files. These can be easily downloaded and edited to suit the needs of your project.

MagRelief™ – important safety innovation for emission systems



The ecoCUBE™ system carefully monitors its overall pressure drop. It is important to maintain the overall pressure drop to a value within the engine manufacturer's specification to avoid possible damage to the engine and to the ecoCUBE™ itself. While the ecoCUBE™ control system generates alarms associated with over-pressure there may be times



that an operator does not or cannot respond (for example in the event of an engine backfire). When these safety conditions occur, the built in MagRelief™ valve opens to bypass components within the ecoCUBE™. Once the over-pressure system is over, the MagRelief™ resets itself. The MagRelief™ valve is a patent pending device that uses temperature compensated magnetics (not springs which can drift based on the high exhaust temperature) to provide the holding and the automatic re-seating capability. A video showing the operation of the MagRelief™ valve on a 1 MW engine is available at:

<http://www.youtube.com/watch?v=6B3aiCxSVaA&feature=plcp>

For more information visit us at:

www.safetypower.ca